

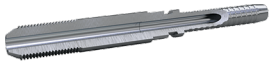


TRANSFER OIL

Pure Fluid Attitude



HM - Male HP



| Part no. | Description | Minimum pack quantity | Insert tail ID mm | Thread F | Hose size | HEX-CH | HEX-CH | WP (psi) | Hoses |
|----------|---------------------------|-----------------------|-------------------|----------------|-----------|--------|--------|----------|------------------------------|
| HMB820 | 1/4 M-HP B/A 5/32 SS | 10 | 2.5 | 1/4-28 UNF LH | DN4 | 5/32 | 0 | 30000 | 2020, 2030, 2120 |
| HME820 | 1/4 M-HP E/C 5/32 SS | 10 | 1.8 | 1/4-28 UNF LH | DN4 | 5/32 | 0 | 58000 | 2040, 2140, 2060 |
| HMK820 | 1/4 M-HP TO BLAST 1/8 SS | 0 | 1.8 | 1/4-28 UNF LH | DN4 | 5/32 | 8 | 31900 | 2040, 2140 |
| HME840 | 3/8 M-HP E/C 5/32 SS | 10 | 1.8 | 3/8-24 UNF LH | DN4 | 5/32 | 0 | 58000 | 2040, 2140, 2060 |
| HME8B0 | 9/16 M-HP E/C 5/32 SS | 10 | 1.8 | 9/16-18 UNF LH | DN4 | 5/32 | 0 | 58000 | 2040, 2140, 2060 |
| HML821 | 1/4 M-HP L 3/16 SS | 0 | 2.5 | 1/4-28 UNF LH | DN5 | 3/16 | 0 | 30000 | 2341 |
| HMC121 | 1/4 M-HP C 3/16 | 10 | 2.5 | 1/4-28 UNF LH | DN5 | 3/16 | 0 | 30000 | 2241, 2041, 2441 |
| HMC821 | 1/4 M-HP C 3/16 SS | 10 | 2.5 | 1/4-28 UNF LH | DN5 | 3/16 | 0 | 30000 | 2241, 2041, 2441 |
| HMC841 | 3/8 M-HP LH C 3/16 SS | 10 | 2.5 | 3/8-24 UNF LH | DN5 | 3/16 | 0 | 30000 | 2241, 2041, 2441 |
| HMC8B1 | 9/16 M-HP C 3/16 SS | 10 | 2.5 | 9/16-18 UNF LH | DN5 | 3/16 | 0 | 30000 | 2241, 2041, 2441 |
| HMK821 | 1/4 M-HP TO BLAST 3/16 SS | 10 | 2.8 | 1/4-28 UNF LH | DN5 | 3/16 | 10 | 26100 | 2041 |
| HMK841 | 3/8 M-HP TO BLAST 3/16 SS | 0 | 2.8 | 3/8-24 UNF LH | DN5 | 3/16 | 10 | 26100 | 2041 |
| HMF821 | 1/4 M-HP F/E 3/16 SS | 10 | 2.4 | 1/4-28 UNF LH | DN5 | 3/16 | 0 | 45000 | 2061, 2161, 2261 |
| HMF841 | 3/8 M-HP F/E 3/16 SS | 10 | 2.4 | 3/8-24 UNF LH | DN5 | 3/16 | 0 | 45000 | 2061, 2161, 2261 |
| HMF8B1 | 9/16 M-HP F/E 3/16 SS | 10 | 2.4 | 9/16-18 UNF LH | DN5 | 3/16 | 0 | 45000 | 2061, 2161, 2261 |
| HMI821 | 1/4 M-HP I/H 3/16 SS | 10 | 2 | 1/4-28 UNF LH | DN5 | 3/16 | 0 | 58000 | 2081 |
| HMI841 | 3/8 M-HP I/H 3/16 SS | 10 | 2 | 3/8-24 UNF LH | DN5 | 3/16 | 0 | 58000 | 2081 |
| HMI8B1 | 9/16 M-HP I/H 3/16 SS | 10 | 2 | 9/16-18 UNF LH | DN5 | 3/16 | 0 | 58000 | 2081 |
| HMB8B2 | 9/16 M-HP B/A 1/4 SS | 10 | 4 | 9/16-18 UNF LH | DN6 | 1/4 | 0 | 24000 | 2022, 2032 |
| HMC842 | 3/8 M-HP C 1/4 SS | 10 | 3.5 | 3/8-24 UNF LH | DN6 | 1/4 | 0 | 30000 | 2042 |
| HMK842 | 3/8 M-HP TO BLAST 1/4 SS | 0 | 4 | 3/8-24 UNF LH | DN6 | 1/4 | 12 | 22000 | 2042 |
| HMF842 | 3/8 M-HP F 1/4 SS | 10 | 3 | 3/8-24 UNF LH | DN6 | 1/4 | 0 | 46400 | 2162 |
| HMF8B2 | 9/16 M-HP F 1/4 SS | 10 | 3 | 9/16-18 UNF LH | DN6 | 1/4 | 0 | 46400 | 2162 |
| HMC8B3 | 9/16 M-HP C/B 5/16 SS | 10 | 4.5 | 9/16-18 UNF LH | DN8 | 5/16 | 0 | 30000 | 2033, 2043 |
| HMF843 | 3/8 M-HP F/E 5/16 SS | 10 | 4.5 | 3/8-24 UNF LH | DN8 | 5/16 | 0 | 40000 | 2063, 2363, 2163 |
| HMF8B3 | 9/16 M-HP F/E 5/16 SS | 10 | 4.5 | 9/16-18 UNF LH | DN8 | 5/16 | 0 | 40000 | 2063, 2363, 2163 |
| HMI843 | 3/8 M-HP I/H 5/16 SS | 10 | 4.5 | 3/8-24 UNF LH | DN8 | 5/16 | 0 | 46400 | 2263, 2083 |
| HMI8B3 | 9/16 M-HP I/H 5/16 SS | 10 | 4.5 | 9/16-18 UNF LH | DN8 | 5/16 | 0 | 55100 | 2263, 2083 |
| HME8B4 | 9/16 M-HP E/C 3/8 SS | 10 | 5.5 | 9/16-18 UNF LH | DN10 | 3/8 | 0 | 40000 | 2044 |
| HMC8B5 | 9/16 M-HP G/D/C/B 1/2 SS | 10 | 7.5 | 9/16-18 UNF LH | DN12 | 1/2 | 0 | 22000 | 2245, 2035, 2045, 2055, 2145 |
| HMF8B5 | 9/16 M-HP F/E 1/2 SS | 10 | 7.5 | 9/16-18 UNF LH | DN12 | 1/2 | 0 | 30000 | 2065, 2165 |
| HMI8B5 | 9/16 M-HP I/H 1/2 SS | 10 | 7.5 | 9/16-18 UNF LH | DN12 | 1/2 | 0 | 43600 | 2265, 2085 |

*Dimensions and values shown may be changed without prior notice to improve product performances and reliability.
Transfer Oil S.p.A. assumes no liability on mistakes nor errors appearing in this spec sheet.
Document date: 26/05/2026
www.transferoil.com*